

## Solos

Materiais, naturais e de construção  
O que são, e como se formam ?

### *Solo = Terra ?*

**Solo:** Camada de material, em constante evolução, formada por meio da alteração das rochas e de processos pedogenéticos, comandados por agentes físicos, químicos e biológicos.

Principais Categorias de um Solo:

**Solo Residual,** ou autóctone: formado *in situ*, diretamente da alteração da rocha subjacente (cristalina ou sedimentar)

**Solos Transportado:** o material, inconsolidado ou em partículas, é transportado, em geral pela água ou pelo vento, e depositado num lugar diferente de sua origem.

## Solos Residuais



**Rocha sã**

- Sujeita a variações térmicas (diárias e sazonais) que causam contração / dilatação.
- Sujeita a alívios de tensão (pressões internas) por desconfinamento.

**Resultado:** fraturamento da rocha em diversas escalas a partir das descontinuidades existentes ou outras heterogeneidades, com entrada de água da chuva (oxigênio) e posterior dissolução de elementos contidos nos minerais.

Fragilização da estrutura da rocha sã.



---

---

---

---

---

---

---

---



Alargamento das fraturas e cominuição natural da rocha.

Evolução da atividade biológica sobre o substrato.

---

---

---

---

---

---

---

---



Enriquecimento em materiais orgânicos.

Alteração dos minerais.

Camada superior muito diferenciada da rocha original, com pequenos fragmentos e partículas minerais.

---

---

---

---

---

---

---

---

Solo imaturo, rochoso



Solo maduro, rico em matéria orgânica e com espesso manto de alteração.

---

---

---

---

---

---

---

---

Solos originados de **rochas cristalinas**

---

---

---

---

---

---

---

---



---

---

---

---

---

---

---

---



Estruturas Reliquiarias da Rocha Mãe

Dobras

Faturas

Foliação

---

---

---

---

---

---

---

---



---

---

---

---

---

---

---



---

---

---

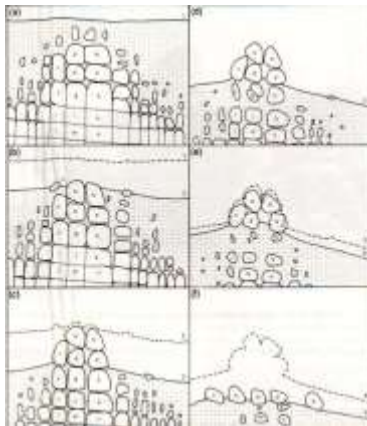
---

---

---

---

Formação de Matações



---

---

---

---

---

---

---



---

---

---

---

---

---

---

---



---

---

---

---

---

---

---

---



---

---

---

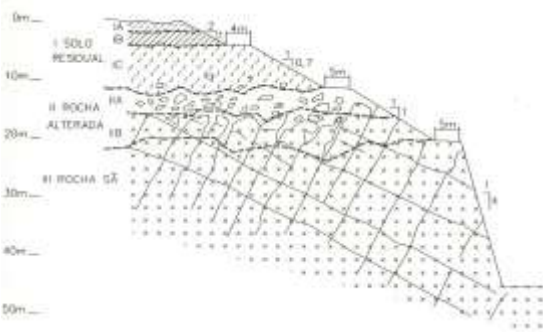
---

---

---

---

---



---

---

---

---

---

---

---

---

---

---

---

---

---

---

---

---

---

---

---

---

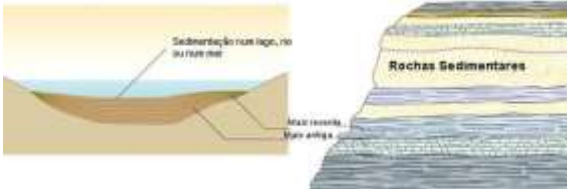
---

---

---

---

Solos originados de **rochas sedimentares**





---

---

---

---

---

---

---

---



---

---

---

---

---

---

---

---



---

---

---

---

---

---

---

---

## Sub-divisão dos Solos **Transportados**

---

---

---

---

---

---

---

### **Coluviões**

Acumulações de detritos inconsolidados, transportados por gravidade desde sua origem, que depositam-se sobre as encostas, acompanhando sua morfologia, e no sopé das encostas, onde estes depósitos são mais espessos.

---

---

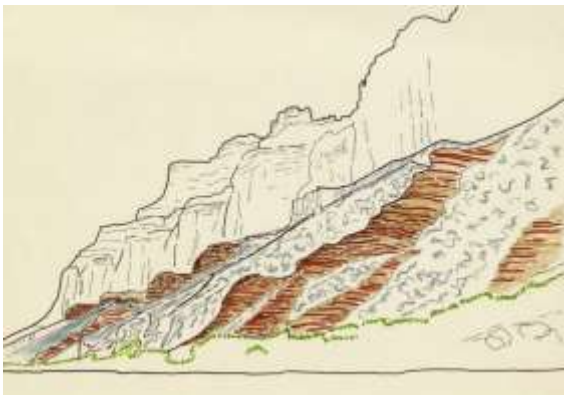
---

---

---

---

---



---

---

---

---

---

---

---





---

---

---

---

---

---

---

---



---

---

---

---

---

---

---

---

**Aluviões**

Acumulações sedimentares recentes, transportadas pela ação de águas correntes, depositadas em regiões baixas

São os SOLOS **SEDIMENTARES**

---

---

---

---

---

---

---

---



---

---

---

---

---

---

---

---



---

---

---

---

---

---

---

---